

## CONTENTS

Introduction .....	3
Basic Information .....	6
Dynamics / Articulations .....	7
Practice Procedures .....	8
Eighth Notes .....	14
Level Best - Duet .....	14
Key Signature .....	16
Dotted-Quarter, Eighth .....	22
Touch My Heart - Duet .....	24
On We Go - Duet .....	32
Jazz Style .....	40
Keep It Low - Duet .....	42
Deep Red - Duet .....	46
About the Author .....	48

### Example 1

♩ = 100

Example 1 consists of two staves of music in bass clef, 4/4 time. The tempo is marked as ♩ = 100. The first staff starts with a measure number '1' and contains five measures of music: G2, A2, B2, C3, and D3. The second staff starts with a measure number '5' and contains five measures: D3, E3, F3, G3, and A3. A large, semi-transparent watermark 'STINNETT' is overlaid across the music.

### Example 2

♩ = 100

Example 2 consists of two staves of music in bass clef, 4/4 time. The tempo is marked as ♩ = 100. The first staff starts with a measure number '1' and contains five measures of music: G2, A2, B2, C3, and D3. The second staff starts with a measure number '5' and contains five measures: D3, E3, F3, G3, and A3. A large, semi-transparent watermark 'MUSIC' is overlaid across the music.

### Example 3

♩ = 100

Example 3 consists of two staves of music in bass clef, 4/4 time. The tempo is marked as ♩ = 100. The first staff starts with a measure number '1' and contains five measures of music: G2, A2, B2, C3, and D3. The second staff starts with a measure number '5' and contains five measures: D3, E3, F3, G3, and A3. A large, semi-transparent watermark 'MUSIC' is overlaid across the music.

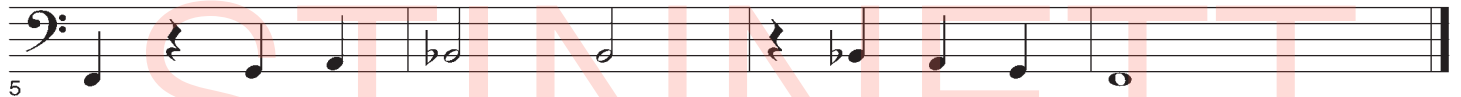
### Example 4

♩ = 100

Example 4 consists of two staves of music in bass clef, 4/4 time. The tempo is marked as ♩ = 100. The first staff starts with a measure number '1' and contains five measures: G2, A2, B2, C3, and D3. The second staff starts with a measure number '5' and contains five measures: D3, E3, F3, G3, and A3. A large, semi-transparent watermark 'MUSIC' is overlaid across the music.

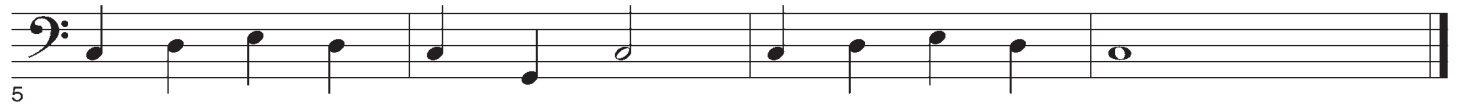
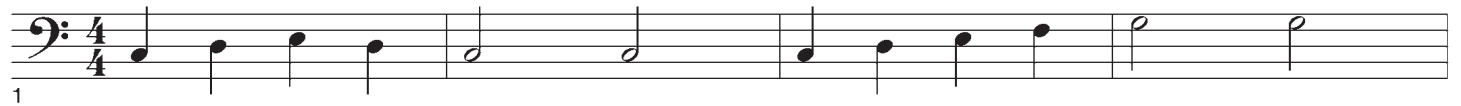
## Example 13

♩ = 100



## Example 14

♩ = 100



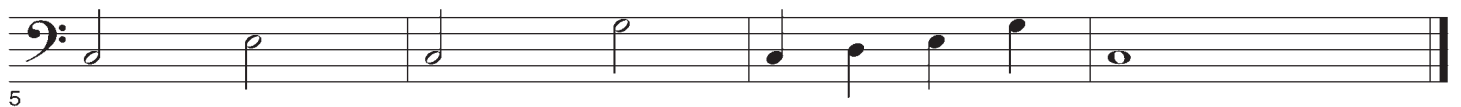
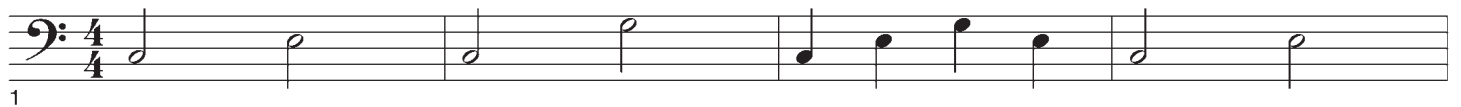
## Example 15

♩ = 100



## Example 16

♩ = 100





## Example 61

♩ = 90

1

5

## Example 62

## On We Go

♩ = 80

1

5

9

### Example 68

♩ = 80

1

5

### Example 69

♩ = 90

1

5

### Example 70

♩ = 90

1

5

### Example 71

♩ = 90

1

5

## Example 78

♩ = 100

1

5

9

13

## Example 79

♩ = 80

1

5

9

13

### Example 84

Jazz

♩ = 70

1

5

9

13

### Example 85

Jazz

♩ = 120

1

5

9

13

Fine

D.C. al Fine