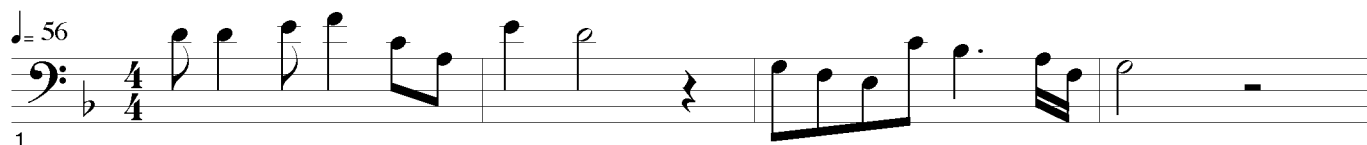
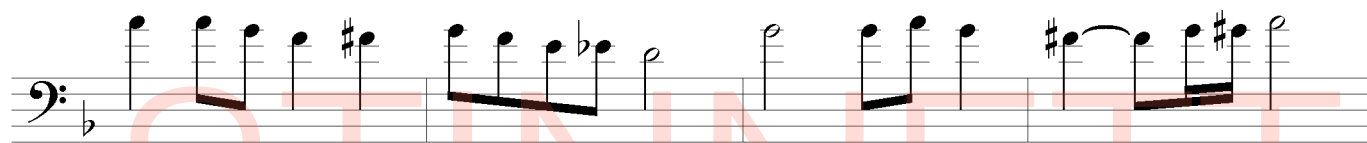


String Bass Studies - No. 35

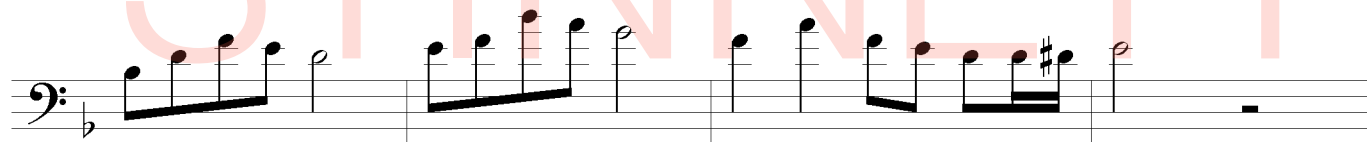
This etude is another exercise in large interval leaps. Playing across the strings makes many of these passages much easier to execute. Look for good fingering that will allow economy of motion.



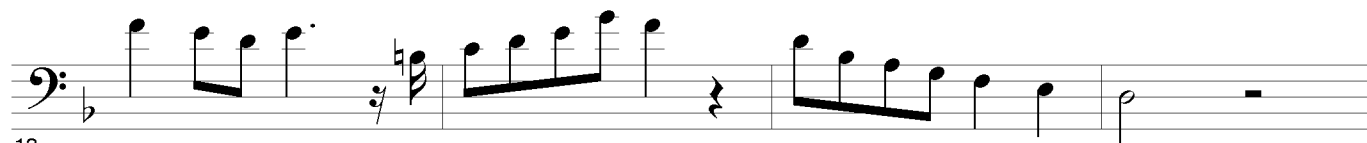
1



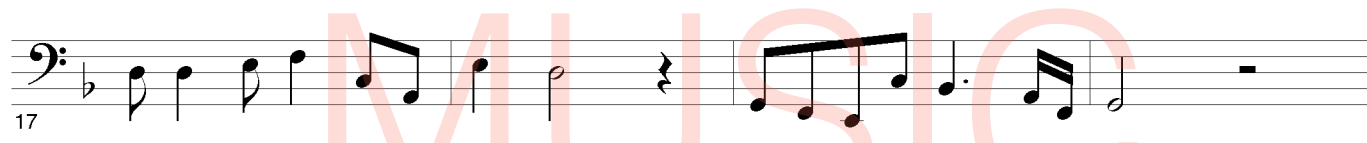
5



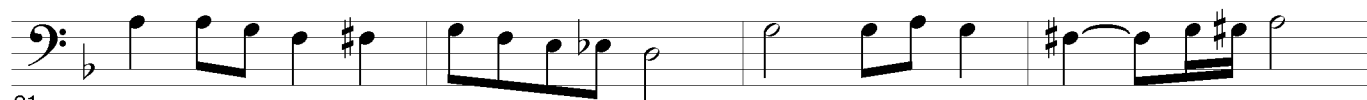
9



13



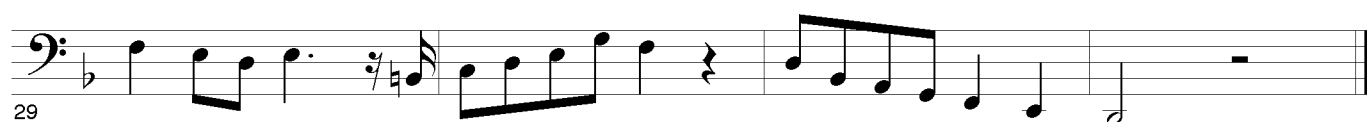
17



21



25



29

String Bass Studies - No. 38

♩ = 110

1

5

9

13

17

21

25

29

String Bass Studies - No. 39

$\text{♩} = 136$

1 Pizz

5

9

13

17

21

25

29

STINNETT
MUSIC

String Bass Studies - No. 43

♩. = 62

1

5

9

13

17

21

25

29

String Bass Studies - No. 47

♩ = 120

1

5

9

13

17

21

25

29

String Bass Studies - No. 50

simile

♩ = 72

4/4

1 G D G D G D G

5 D G A G D A D G (non harmonics)

9 D G D D G D D G D

13 D A A D

17

21 A D A D

25

29 *simile like bgeinning*